



# GMT MONTHLY MEMBERSHIP PROGRESS REPORT

Results as of: 5/31/2020

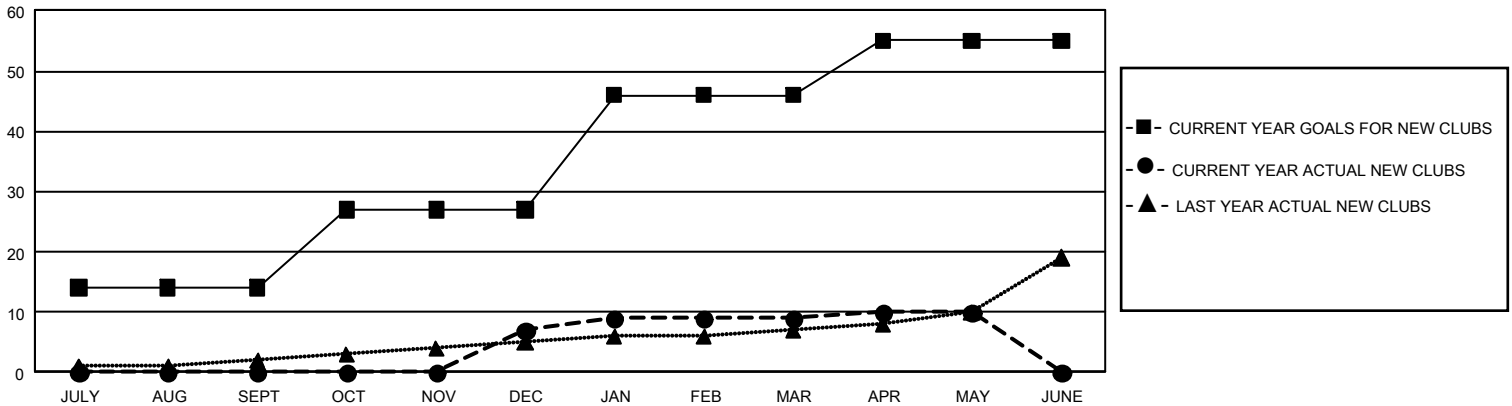
## GMT Constitutional Area 1, Group B

GMT: OPEN

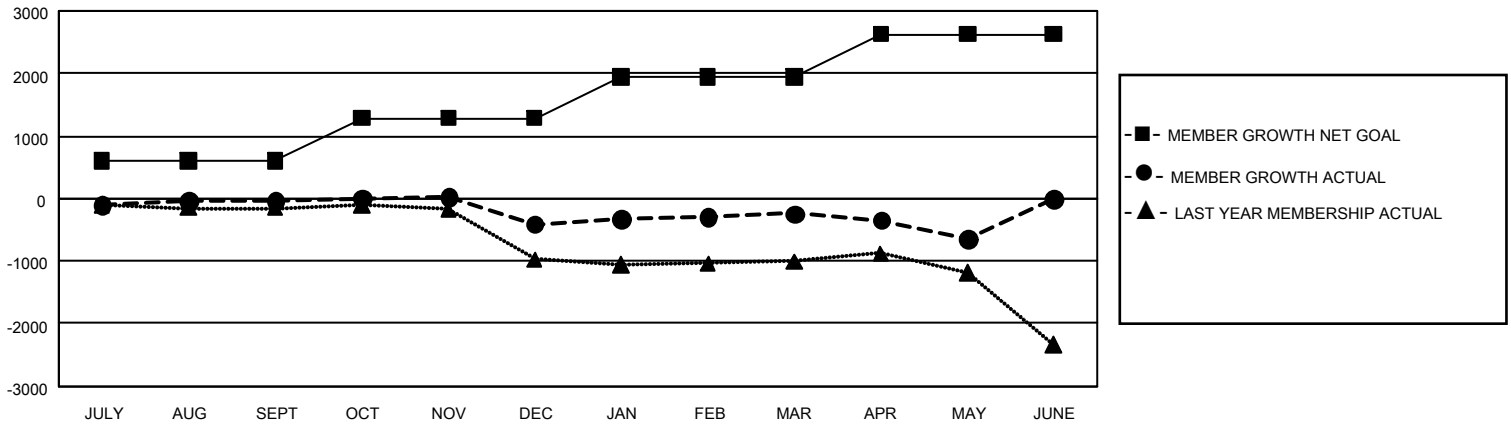
REPORT DOES NOT INCLUDE CLUBS IN UNDISTRICTED AREAS.

Clubs				Members			
RESULTS FOR 2019-2020				RESULTS FOR 2019-2020			
QUARTER	NEW CLUB GOAL	NEW CLUBS	DROPPED CLUBS	QUARTER	MEMBER GROWTH NET GOAL	MEMBER GROWTH ACTUAL	DROPPED MEMBERS ACTUAL (including transfers)
JULY/AUG/SEPT	42	0	25	JULY/AUG/SEPT	1,821	1,205	1,074
OCT/NOV/DEC	39	7	15	OCT/NOV/DEC	2,025	1,128	1,391
JAN/FEB/MAR	57	2	2	JAN/FEB/MAR	1,989	1,088	830
APR/MAY/JUNE	27	1	3	APR/MAY/JUNE	2,046	342	675

GOALS AND ACTUAL NEW CLUBS CUMULATIVE



GOALS AND ACTUAL MEMBERS CUMULATIVE



DROPPED CLUBS: 45	770 CLUBS OF 1,318 ADDED 1 OR MORE NEW MEMBERS	<u>GENDER DISTRIBUTION</u>	
<u>DROPPED MEMBERS</u>		MALE	20,398 (61.16%)
DECEASED	399	FEMALE	12,955 (38.84%)
CLUB CANCELLED	294	TOTAL FAMILY UNIT MEMBERS	6,508
OTHER	3,275	FAMILY MEMBERS PAYING HALF DUES	3,385
TOTAL	3,968		

[CLICK HERE FOR CUMULATIVE MEMBERSHIP DATA](#)